



Press release

Labour: 566 thousand hirings expected by companies in June and almost 1.4 million by August

Expectations for the South and Islands are positive, supported by construction and trade; the slowdown in manufacturing continues, especially in the North East

Rome, 11 June 2024 – There are approximately 566 thousand job opportunities planned by companies in June and they rise to almost 1.4 million in the June-August quarter, with an almost stable trend compared to June 2023 (-0.3%) and a slight increase on the corresponding quarter (+ 0.6%). During the month, the best dynamics were recorded by construction (+16.6%), trade (+10.5%) and advanced services (+11.5%). However, the manufacturing sector was down (-5.6%). Even in June, 47.6% of the profiles searched for were difficult to find (+1.6 p.p. compared to the previous year). This scenario is outlined by the Excelsior Information System Bulletin, created by **Unioncamere** in collaboration with **Ministry of Labour and Social Policies**¹.

In the current month, the manufacturing sector is looking for a total of 84 thousand workers in June and 223 thousand in the quarter. The greatest job opportunities are offered by the mechatronics industries which are looking for 21 thousand workers in the month and 55 thousand in the quarter, followed by the metallurgical and metal products industries (15 thousand in the month and 39 thousand in the quarter) and by the food, beverage and tobacco industries (13 thousand in the month and 46 thousand in the quarter). The demand for labor from the construction sector stands at almost 52 thousand hirings in June and over 130 thousand hirings in the quarter. On the other hand, 430 thousand employment contracts are being offered by the service sector in the current month and over 1 million are expected in the June-August quarter. Tourism offers the greatest employment opportunities with approximately 161 thousand workers sought in the month and 351 thousand in the quarter, followed by trade (76 thousand in the month and 190 thousand in the quarter), by the personal services sector (71 thousand in the month and 169 thousand in the quarter).

From a territorial point of view, the South recorded the most significant trend balance (+3.8 thousand on June and +19 thousand on the quarter) supported, in particular, by the positive dynamics of construction and trade; the decline in manufacturing penalizes the other geographical areas, especially the North East (overall -4.4 thousand in the month and -10.3 thousand in the quarter); more stable, again compared to a year ago, in the North West and Centre.

The greatest opportunities are reported by medium-sized companies with approximately 196 thousand contracts expected in June.

¹ The May forecasts are based on interviews conducted on a sample of over 107 thousand companies. The interviews were collected in the period 15 April 2024 - 03 May 2024.

There are around 270 thousand hires for which companies have declared they have encountered difficulties in finding the right profile. The Borsino Excelsior of the professions highlights technicians in the engineering field among the technical and highly specialized professions with 66.7% being difficult to find, followed by technicians in the management of production processes of goods and services (58.5%), from commercial distribution technicians (58.1%), from engineers and IT technicians (both 56.7%), while among the specialized workers figures stand out foundries, welders, tinsmiths, boilermakers, metal carpentry assemblers (75.1%), specialized workers involved in construction finishing (73.1%) and blacksmiths and tool builders (70.2%). Machine workers in the textile and clothing industry are also difficult to find (76.3%).

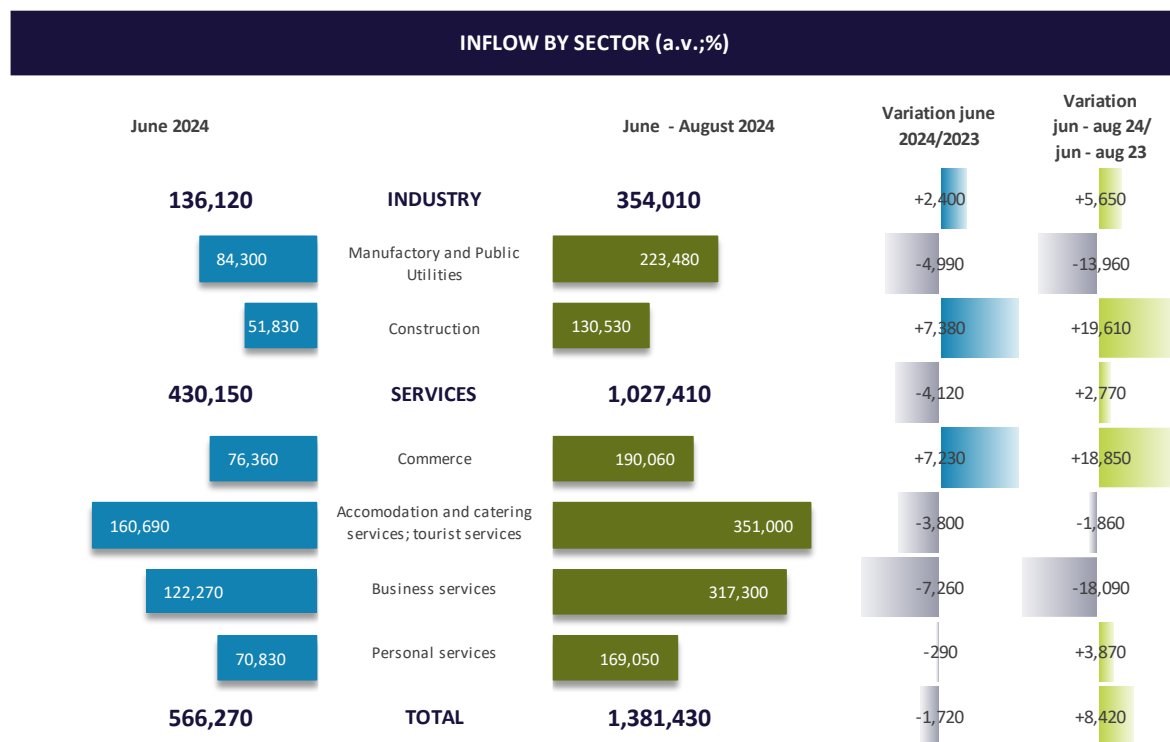
The demand for immigrant workers remains high, although slightly decreasing compared to last year, with 104 thousand hirings expected for the month, equal to 18.4% of the total. Among the sectors that make most use of foreign labor are operational support services for businesses and people (34.3%), transport, logistics and warehousing services (28.4%), metallurgy (22.6%) and construction (21.8%).

For more information:

06.4704 264-350 / 348.9025607-366.4157335

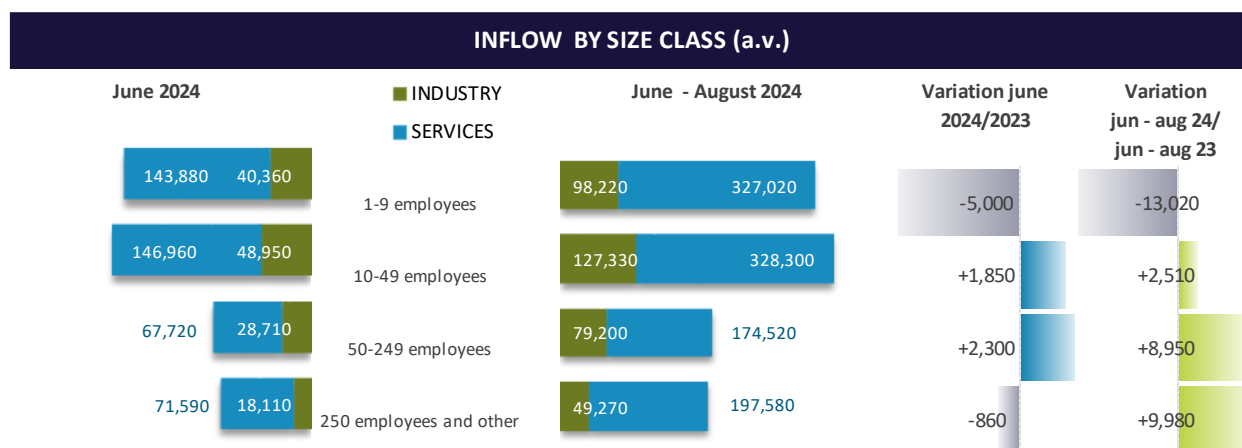


INFLOW OF WORKERS FORECAST BY COMPANIES BASED ON BUSINESS SECTOR (a.v.; %)



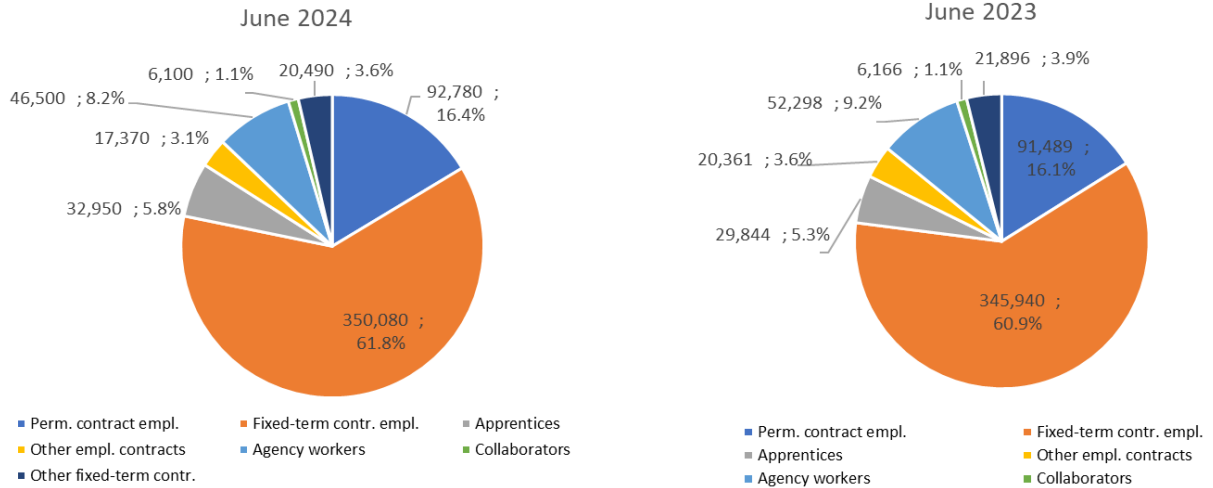
Source: Unioncamere - Ministry of Labour and Social Policies, Excelsior Information System, 2024

INFLOW OF WORKERS EXPECTED BY COMPANIES BY SIZE CLASS (a.v.; %)



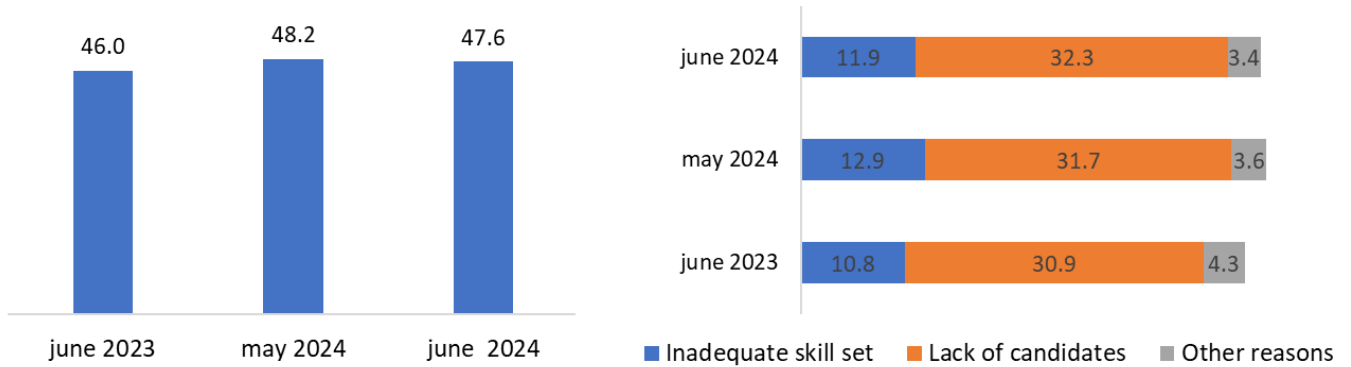
Source: Unioncamere - Ministry of Labour and Social Policies, Excelsior Information System, 2024

INFLOW OF WORKERS FORECAST BY COMPANIES BY CONTRACT TYPE (a.v.; %)



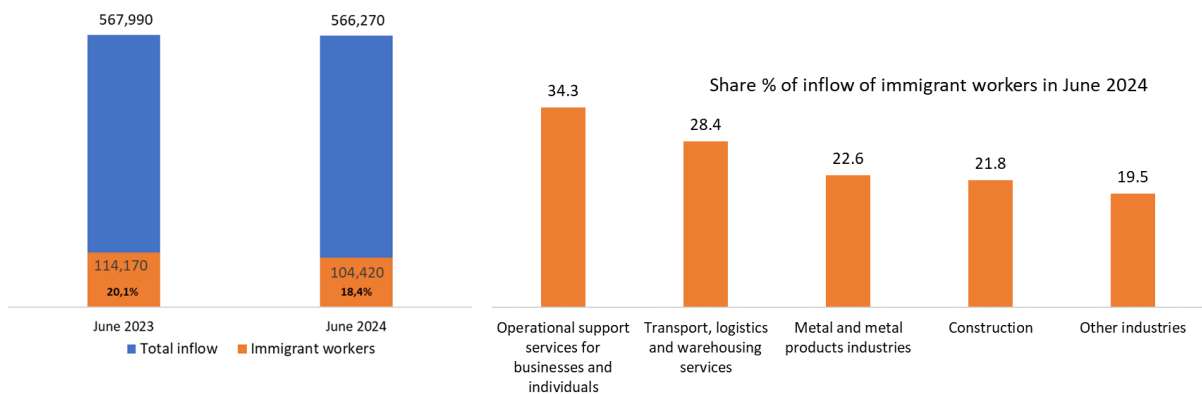
Source: Unioncamere - Ministry of Labour and Social Policies, Excelsior Information System, 2024

DIFFICULTY IN RECRUITING AND REASONS (%)



Source: Unioncamere - Ministry of Labour and Social Policies, Excelsior Information System, 2024

INFLOW OF IMMIGRANT PERSONNEL AND MAIN SECTORS HIRING IMMIGRANT WORKERS (a.v.; %)



Source: Unioncamere - Ministry of Labour and Social Policies, Excelsior Information System, 2024

THE PROFESSIONS MOST IN DEMAND IN THE MONTH OF JUNE 2024 *

according to the classification of professions - ISTAT 2021 (3 digit)

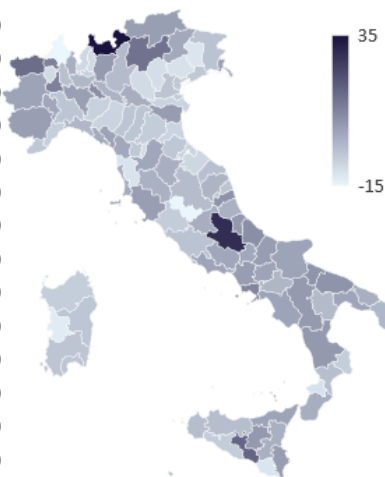
	INFLOW EXPECTED IN JUNE 2024	Distribu tion x 1000	Difficulty in recruiting (%)	INFLOW EXPECTED june - august 2024
INFLOW	566,270	1,000	47.6	1,381,430
MANAGERS	830	1.5	51.4	2,190
Directors and general managers of companies	250	0.4	59.5	680
Directors and departmental managers of companies	260	0.5	57.0	660
Entrepreneurs and managers of small companies	310	0.5	40.3	840
INTELLECTUAL, SCIENTIFIC AND HIGHLY SPECIALISED PROFESSIONS	24,060	42.5	49.8	64,570
Engineers	4,680	8.3	56.7	12,020
Specialists in management, commercial and banking sciences	4,980	8.8	43.9	13,100
Analysts and experts in designing applications	2,260	4.0	53.8	6,000
TECHNICAL PROFESSIONS	55,320	97.7	53.8	140,740
IT, telematics and telecommunications technicians	5,860	10.4	56.7	15,950
Engineering technicians	6,150	10.9	66.7	13,720
Goods and services production processes management technicians	5,190	9.2	58.5	12,400
Health technicians	9,310	16.4	60.5	24,750
Technicians of the organisation and administration of production activities	5,150	9.1	56.1	12,810
Technicians of financial and insurance activities	2,170	3.8	33.7	5,150
Market relations technicians	11,130	19.7	50.0	28,090
Commercial distribution technicians	2,440	4.3	58.1	5,770
OFFICE WORKERS	44,070	77.8	34.1	107,900
Secretarial and general affairs office staff	16,410	29.0	34.5	41,270
Counter and money movement workers	2,540	4.5	29.1	6,190
Customer reception and information office staff	15,390	27.2	33.9	35,530
Logistics administrative management office staff	3,820	6.7	32.4	10,490
Economic, accounting and financial management office staff	3,790	6.7	44.3	9,530
SKILLED PROFESSIONS IN COMMERCIAL ACTIVITIES AND IN SERVICES	210,550	371.8	46.5	486,110
Sales people	49,010	86.5	29.8	124,910
Catering business operators	130,770	230.9	52.8	292,280
Qualified professions in health and social services	8,340	14.7	53.7	22,440
Beauty treatment professionals	4,950	8.7	56.8	9,030
Skilled professions in personal services	5,480	9.7	39.2	15,100
Qualified professions in security, surveillance and custodial services	9,300	16.4	40.7	16,930
ARTISANS, SPECIALISED LABOURERS AND AGRICULTURALISTS	79,270	140.0	66.3	200,930
Specialised labourers in construction and building maintenance	16,540	29.2	58.6	41,620
Building finisher artisans and specialised labourers	16,460	29.1	73.1	42,880
Specialized workers responsible for cleaning and hygiene of buildings	2,330	4.1	56.6	4,740
Smelters, welders, tinsmiths, boilermakers, metal structure fitters and similar profession.	7,100	12.5	75.1	17,870
Blacksmith ironworkers, tool makers and similar professions	4,270	7.5	70.2	10,930
Artisan mechanics, fitters, repairers and maintenance technicians for stationary and mobi	10,010	17.7	67.0	26,320
Electrical and electronic equipment installation and maintenance artisans and specialised	7,690	13.6	67.8	18,230
Artisans and specialised workers in food processing	3,240	5.7	59.3	11,050
Artisans and specialised workers in textile and clothing	3,570	6.3	60.4	6,950
PLANT OPERATORS AND STATIONARY AND MOBILE MACHINERY OPERATORS	56,170	99.2	49.2	154,950
Automatic and semi-automatic machinery workers for metal processing and for mineral p	3,680	6.5	65.9	9,840
Workers assigned to machinery in the industry of textiles, garments and similar	2,910	5.1	76.3	6,160
Workers assigned to assembly of industrial products	4,640	8.2	49.0	11,540
Workers assigned to industrial product packaging machines	4,130	7.3	21.0	12,020
Workers assigned to fixed machinery for the food industry	2,740	4.8	28.6	12,090
Drivers of motor and animal-drawn vehicles	22,600	39.9	54.6	61,820
Operators of earthmoving, lifting and material handling machinery	7,080	12.5	42.7	19,680
UNSKILLED PROFESSIONS	96,000	169.5	35.7	224,030
Unskilled staff assigned to moving an delivery of goods	24,730	43.7	31.9	62,420
Unskilled cleaning service staff	55,740	98.4	37.3	127,240
Unskilled staff custodian services for buildings, equipment and goods	3,580	6.3	22.4	8,760
Unskilled construction personnel	4,060	7.2	32.9	7,570
Unskilled staff assigned to manufacturing	3,510	6.2	40.7	8,080

* The professions requested for the main professional groups are presented here. The sum of the inflow of workers for each "group shown", therefore, does not correspond to the total.

Source: Unioncamere - Ministry of Labour and Social Policies, Excelsior Information System, 2024

THE INFLOW IN THE TERRITORIES IN THE MONTH OF JUNE 2024 AND IN THE PERIOD JUNE - AUGUST 2024

	June 2024		June - August 2024		Variation (v.a.)		Variation % forecast inflow june 2024/2023
	INFLOW FORECAST	% diff. recruiting	INFLOW FORECAST	june 2024/2023	jun - aug 24/ jun - aug 23		
PIEMONTE	30,640	50.8	81,280	+420	+1,040		
VALLE D'AOSTA	3,070	57.9	6,330	+410	+650		
LOMBARDIA	94,360	48.1	237,140	+130	-1,460		
LIGURIA	16,860	49.7	38,200	-370	-1,070		
TRENTINO ALTO ADIGE	23,390	53.9	50,370	+2,000	+2,290		
VENETO	48,480	52.2	120,770	-3,160	-5,960		
FRIULI VENEZIA GIULIA	10,810	52.5	28,190	-350	-310		
EMILIA ROMAGNA	54,260	48.8	125,580	-2,860	-6,270		
TOSCANA	38,910	49.2	88,760	+140	+470		
UMBRIA	5,560	55.7	15,480	-300	-270		
MARCHE	17,470	46.5	37,890	-370	-890		
LAZIO	52,200	41.6	129,930	-1,190	+1,260		
ABRUZZO	15,190	50.9	36,180	+1,100	+3,370		
MOLISE	2,190	52.3	5,780	+100	+670		
CAMPANIA	40,680	42.6	109,960	+2,580	+6,820		
PUGLIA	37,880	43.9	87,750	+1,190	+4,370		
BASILICATA	3,720	50.7	10,570	+100	+540		
CALABRIA	15,150	46.8	37,000	-40	+810		
SICILIA	31,890	45.2	80,950	-40	+2,460		
SARDEGNA	23,550	43.3	53,340	-1,230	-90		
NORTH WEST	144,940	49.1	362,940	+600	-840		
NORTH EAST	136,940	51.2	324,910	-4,370	-10,260		
CENTRAL	114,140	45.6	272,060	-1,710	+570		
SOUTH AND ISLANDS	170,260	44.9	421,520	+3,770	+18,940		
ITALY	566,270	47.6	1,381,430	-1,720	+8,420		



Source: Unioncamere - Ministry of Labour and Social Policies, Excelsior Information System, 2024

For more information:

06.4704 264-350 / 348.9025607-366.4157335

